

WEST VIEW PARK SUBDIVISION NO. 1

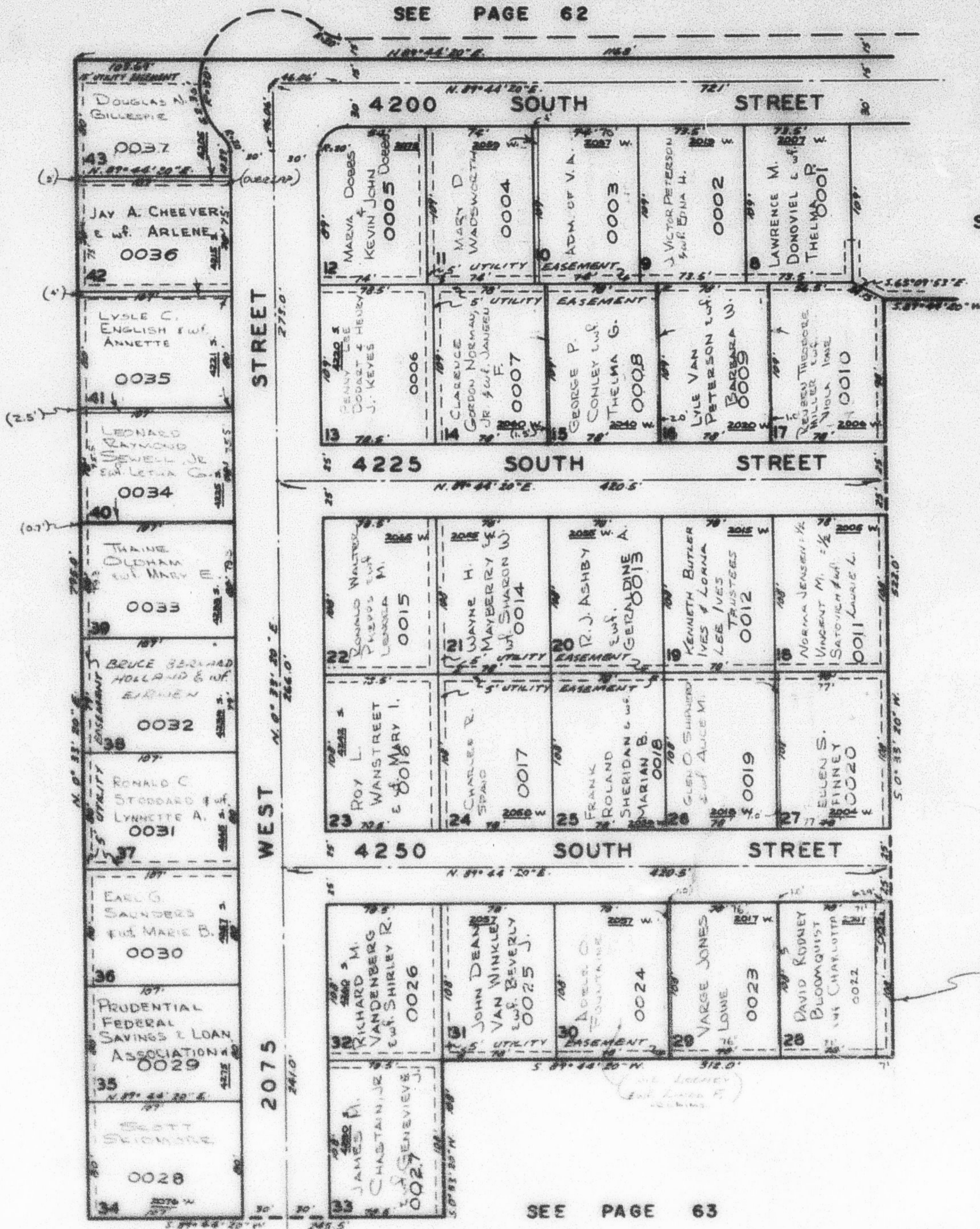
LOTS 8 - 43
IN ROY CITY

TAXING UNIT: 41

PREFIX: 08-065
NORTH DAVIS COUNTY SEWER DISTRICT
ROY WATER CONSERVANCY SUBDISTRICT

SCALE 1" = 80'

SEE PAGE 62



SEE PAGE 64

SEE PAGE 67

SEE PAGE 173

(SUBURBAN HOMES & DEVELOPMENT, INC.)

SEE PAGE 63